

Lesson 6D ver 2

6Feb2015

Across

5. The current flowing through a 24-ohm resistor connected across 240 volts
7. _____ in microfarads equal 1,000,000 picofarads
9. _____ is a measure of the opposition to AC current flow in a circuit
11. A _____-_____ single-throw switch is represented by item 3 in figure T2
12. An _____ circuit is the name of a device that combines several semiconductors and other components into one package
13. Nickel-metal hydride; Lithium-ion; and Lead-acid gel-cell battery types are _____

Down

1. A _____ is component 8 in figure T2
2. Ensure that the circuit is not _____ before measuring circuit resistance with an ohmmeter
3. Copper is a good electrical _____
4. The current flow in a circuit with an applied voltage of 120 volts and a resistance of 10 ohms
6. A _____ is often used as an adjustable volume control
8. Electrical current is measured in _____
10. A _____ measures electric potential or electromotive force

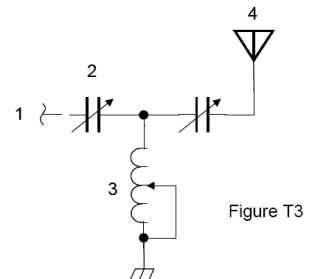
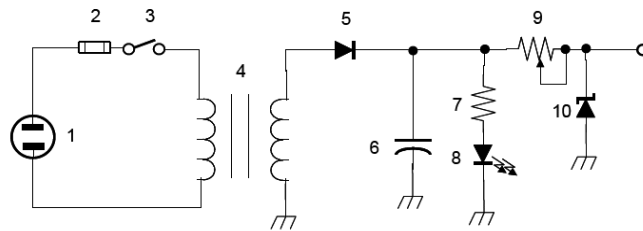
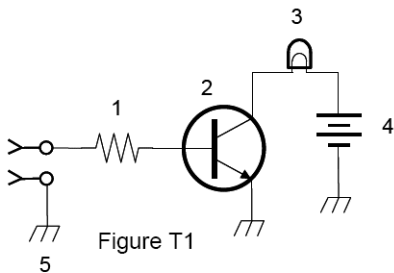
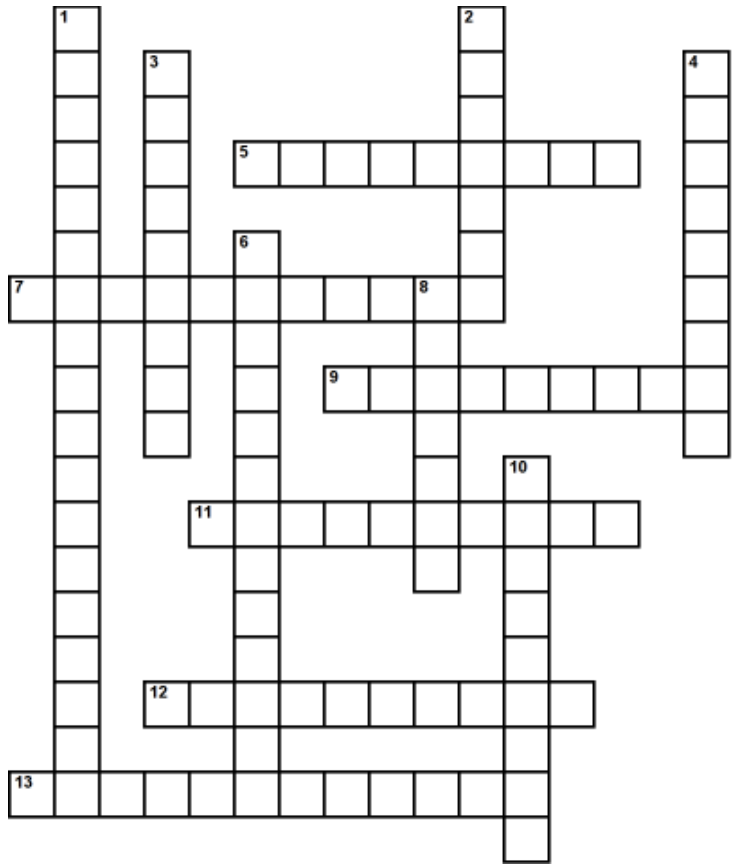


Figure T2